



MIAMI-DADE COUNTY
 BUILDING CODE COMPLIANCE OFFICE (BCCO)
 PRODUCT CONTROL DIVISION

MIAMI-DADE COUNTY, FLORIDA
 METRO-DADE FLAGLER BUILDING

140 WEST FLAGLER STREET, SUITE 1603
 MIAMI, FLORIDA 33130-1563
 (305) 375-2901 FAX (305) 375-2908

www.miamidade.gov

NOTICE OF ACCEPTANCE (NOA)

Bristolite Skylights
 401 East Goetz Avenue
 Santa Ana, CA 92707

SCOPE:

This NOA is being issued under the applicable rules and regulations governing the use of construction materials. The documentation submitted has been reviewed by Miami-Dade County Product Control Division and accepted by the Board of Rules and Appeals (BORA) to be used in Miami Dade County and other areas where allowed by the Authority Having Jurisdiction (AHJ).

This NOA shall not be valid after the expiration date stated below. The Miami-Dade County Product Control Division (In Miami Dade County) and/or the AHJ (in areas other than Miami Dade County) reserve the right to have this product or material tested for quality assurance purposes. If this product or material fails to perform in the accepted manner, the manufacturer will incur the expense of such testing and the AHJ may immediately revoke, modify, or suspend the use of such product or material within their jurisdiction. BORA reserves the right to revoke this acceptance, if it is determined by Miami-Dade County Product Control Division that this product or material fails to meet the requirements of the applicable building code.

This product is approved as described herein, and has been designed to comply with the High Velocity Hurricane Zone of the Florida Building Code.

DESCRIPTION: Series "1000" 3/8" Glass-Clad Polycarbonate and Aluminum Extrusions Skylight Systems

APPROVAL DOCUMENT: Drawing titled "Missile Impact Test", sheets 1 through 8 of 8, prepared by Engineering Express, signed and sealed by Frank L. Bennardo, P.E. on March 21, 2007, bearing the Miami-Dade County Product Control Renewal stamp with the Notice of Acceptance number and the expiration date by the Miami-Dade County Product Control Division.

MISSILE IMPACT RATING: Large and Small Missile Impact

LABELING: Each unit shall bear a permanent label with the manufacturer's name or logo, city, state and the following statement: "Miami-Dade County Product Control Approved", unless otherwise noted herein.

RENEWAL of this NOA shall be considered after a renewal application has been filed and there has been no change in the applicable building code negatively affecting the performance of this product.

TERMINATION of this NOA will occur after the expiration date or if there has been a revision or change in the materials, use, and/or manufacture of the product or process. Misuse of this NOA as an endorsement of any product, for sales, advertising or any other purposes shall automatically terminate this NOA. Failure to comply with any section of this NOA shall be cause for termination and removal of NOA.

ADVERTISEMENT: The NOA number preceded by the words Miami-Dade County, Florida, and followed by the expiration date may be displayed in advertising literature. If any portion of the NOA is displayed, then it shall be done in its entirety.

INSPECTION: A copy of this entire NOA shall be provided to the user by the manufacturer or its distributors and shall be available for inspection at the job site at the request of the Building Official.

This NOA **renews NOA # 06-0913.07** and consists of this page 1, evidence submitted pages E-1 & E-2 as well as approval document mentioned above.

The submitted documentation was reviewed by **Helmy A. Makar, P.E., M.S.**



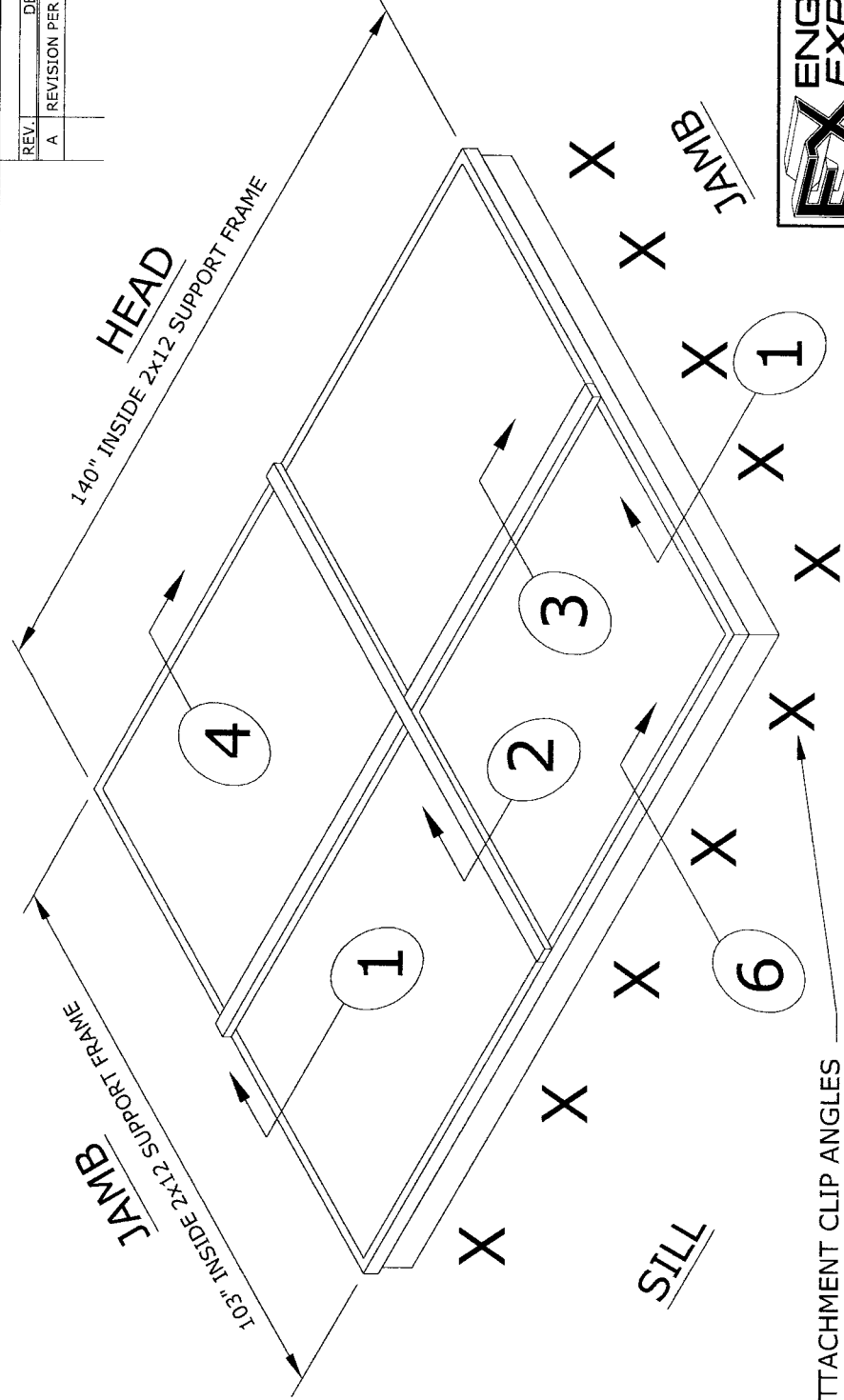
Helmy A. Makar
 08/14/2008

NOA No. 07-0524.05
 Expiration Date: 12/10/2011
 Approval Date: 08/14/2008
 Page 1

| REV. | DESCRIPTION | DATE | BY |
|------|-------------------------------|------------|------|
| A | REVISION PER METRO-DADE NOTES | 12-20-2006 | R.P. |

140" INSIDE 2x12 SUPPORT FRAME

103" INSIDE 2x12 SUPPORT FRAME



ATTACHMENT CLIP ANGLES
TYP. 4 SIDES

- 1.- 0.060" GE LEXAN POLYCARBONATE GLAZING COMPOSITE, WITH GLASS FACINGS FOR ABRASION PROTECTION ONLY.
- 2.- MAXIMUM GLAZING PANEL SIZE = 48" x 67 5/8".

NOTES: UNLESS OTHERWISE SPECIFIED

PRODUCT RENEWED
as complying with the Florida Building Code
Acceptance No. 07-0524.05
Expiration Date 12/10/2011
By Helmut A. Weller
Miami Design Product Control Division

PRODUCT RENEWED
as complying with the Florida Building Code
Acceptance No. 06-0913.07
Expiration Date 12/10/2007
By Helmut A. Weller
Miami Design Product Control Division

ENGINEERING EXPRESS
160 SW 12th AVENUE, #1066
DEERFIELD BEACH, FL 33442
PH: (954) 354-0660 FAX: (954) 354-0443
WWW.ENGEXP.COM

CERT OF AUTH #9885
A FRANK L. BENNARDO, P.E., INC. INNOVATION ENGINEER SEAL

FRANK L. BENNARDO, P.E.
FL #PE0046549

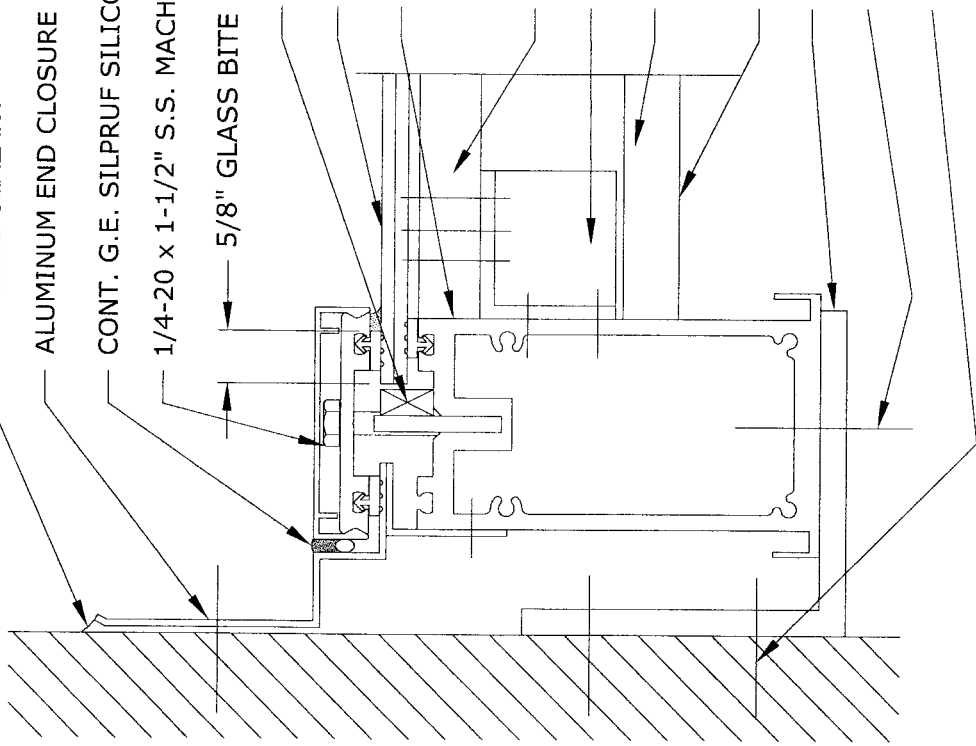
MAR 21 2007

VALID ONLY WITH RAISED ENGINEER SEAL

| | | |
|--|---|----------------------------|
| ALL DIMENSIONS ARE IN INCHES TOLERANCES: UNLESS OTHERWISE SPECIFIED .X: ±.06 .XX: ±.03 .XXX: ±.010 ANGULAR: ±2° FRACTIONAL: ±1/16" | SCALE: NONE | MATERIAL: NONE |
| DRAWN BY: R.P. DATE: 12-20-06 | NAME: Bristolite® Skylights 401 East Coetz Avenue, Santa Ana, CA 92707 714.540.8950 / FAX 714.545.2364 | |
| APPROVED BY: | DWG NO. Missile Impact Test | |
| | REV: A | SHEET 1 OF 8 |
| | NEXT ASSEMBLY: Part Number | |

| REV. | DESCRIPTION | DATE | BY |
|------|-------------------------------|------------|------|
| A | REVISION PER METRO-DADE NOTES | 12-20-2006 | R.P. |

SILICONE SEALANT
 ALUMINUM END CLOSURE
 CONT. G.E. SILPRUF SILICONE SEALANT TYP.
 1/4-20 x 1-1/2" S.S. MACH SCREW @ 8" O.C.



5/8" GLASS BITE
 GLAZING BLOCK
 GLAZING PANEL
 ALUM. RAFTER W/E.P.D.M. GASKET
 (3) #12 x 1-1/2" TEK SCREWS
 (4) #12 x 2" TEK SCREWS
 1 1/2" x 2" x 1/8" THK. CLIP ANGLE
 W/WELDED RETURNS ON 2 SIDES
 PURLIN
 3" x 3" x 1/4" ANGLE
 1/4" x 1" STS (4)
 3/8" x 3" LAG SCREWS (4)

PRODUCT RENEWED
 as complying with the Florida
 Building Code
 Acceptance No. 07-0524-05
 Expiration Date 12/10/2011
 By *Helmut H. Moller*
 Miami Dade District Control
 Division

PRODUCT RENEWED
 as complying with the Florida
 Building Code
 Acceptance No. 06-9913-07
 Expiration Date 12/19/2007
 By *Helmut H. Moller*
 Miami Dade District Control
 Division

ENGINEERING EXPRESS
 FRANK L. BENNARDO, P.E.
 FL #PE0046549

160 SW 12th AVENUE, # 106
 DEERFIELD BEACH, FL 33442
 PH: (954) 354-0660 FAX: (954) 354-0443
 WWW.ENGEXP.COM

CERT. OF AUTH #9885
 A. FRANK L. BENNARDO, P.E., INC. INNOVATION

MAR 21 2007
 VALID ONLY WITH RAISED
 ENGINEER SEAL

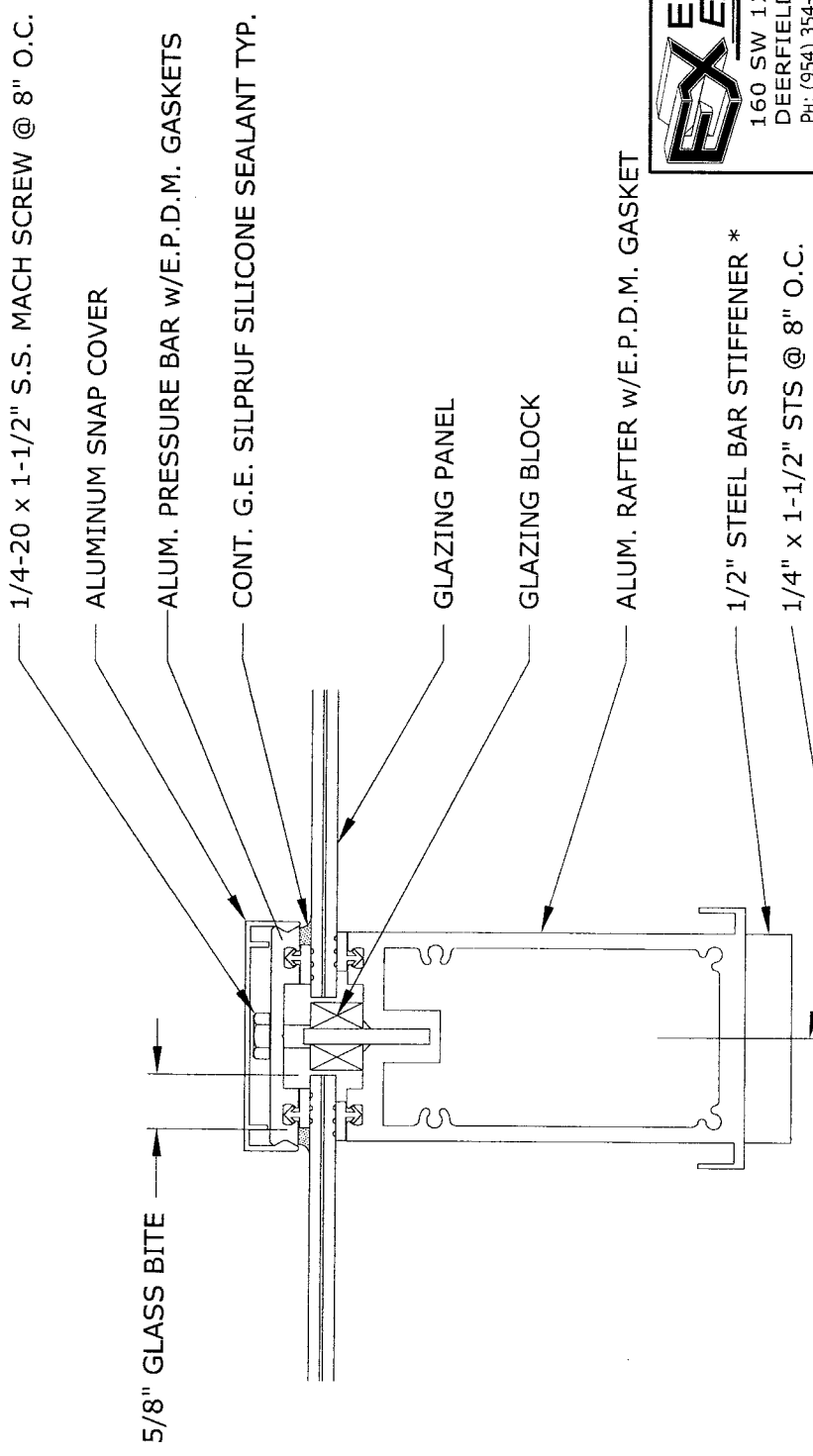
| | | | |
|--|--------------------------|---------------------|--------------|
| SCALE | NONE | MATERIAL | NONE |
| ALL DIMENSIONS ARE IN INCHES TOLERANCES: UNLESS OTHERWISE SPECIFIED .X: ±.06 .XX: ±.03 .XXX: ±.010 ANGULAR: ±2° FRACTIONAL: ±1/16" | | | |
| DRAWN BY: | R.P. | DATE: | 12-20-06 |
| APPROVED BY: | | DATE: | |
| NAME | | Missile Impact Test | |
| DWG NO. | Submittal 12-20-2006 - 2 | | REV A |
| NEXT ASSEMBLY | | | SHEET 2 OF 8 |

Bristolite® Skylights
 401 East Coelz Avenue, Santa Ana, CA 92707
 714-540-8950 / FAX 714-545-2364

DETAIL 1
FRAME ATTACHMENT

NOTES: UNLESS OTHERWISE SPECIFIED

| REVISIONS | | |
|-----------|-------------------------------|------------|
| REV. | DESCRIPTION | DATE |
| A | REVISION PER METRO-DADE NOTES | 12-20-2006 |
| | | R.P. |



PRODUCT RENEWED
 as complying with the Florida
 Building Code
 Acceptance No 07-0524.05
 Expiration Date 12/10/2011
 By Heeling A. Mota
 Miami State Product Control
 Division

PRODUCT RENEWED
 as complying with the Florida
 Building Code
 Acceptance No 06-9913.07
 Expiration Date 12/10/2007
 By Heeling A. Mota
 Miami State Product Control
 Division

ENGINEERING EXPRESS
 FRANK L. BENNARDO, P.E.
 FL #PE0046549

160 SW 12th AVENUE, #106
 DEERFIELD BEACH, FL 33442
 PH: (954) 354-0660 FAX: (954) 354-0443
 WWW.ENGEXP.COM

CERT OF AUTH #9885
 A FRANK L. BENNARDO, P.E., INC. INNOVATION
 ENGINEER SEAL

MAR 21 2007
 VALID ONLY WITH RAISED
 ENGINEER SEAL

| | | |
|---|---|----------------|
| ALL DIMENSIONS ARE IN INCHES TOLERANCES: UNLESS OTHERWISE SPECIFIED | SCALE: NONE | MATERIAL: NONE |
| .X: ±.06 .XX: ±.03 .XXX: ±.010 ANGULAR: ±2° FRACTIONAL: ± 1/16" | | |
| DRAWN BY: R.P. DATE: 12-21-06 | NAME: Bristolite® Skylights 401 East Goetz Avenue, Santa Ana, CA 92707 714.540.8950 / FAX 714.545.2364 | |
| APPROVED BY: | Missile Impact Test | |
| | DWG NO. Submittal 12-20-2006 - 3 | REV A |
| | NEXT ASSEMBLY | SHEET 3 OF 8 |

DETAIL 2
RAFTER

* EQUIVALENT TO 6" RAFTER.
 NOTES: UNLESS OTHERWISE SPECIFIED

| REVISIONS | | |
|-----------|-------------------------------|------------|
| REV. | DESCRIPTION | DATE |
| A | REVISION PER METRO-DADE NOTES | 12-20-2006 |
| | | R.P. |

1/4-20 x 1-1/2" S.S. MACH SCREW @ 8" O.C.

5/8" GLASS BITE

ALUM. PRESSURE BAR w/E.P.D.M. GASKETS

CONT. G.E. SILPRUF SILICONE SEALANT TYP.

GLAZING PANEL

GLAZING BLOCK

ALUM. RAFTER w/E.P.D.M. GASKET

(3) 1-1/2" #12 TEK SCREWS

(4) #12 x 2" TEK SCREWS


1-1/2" x 2" x 1/8" THK.
CLIP ANGLE

DETAIL 3

PURLIN

PRODUCT REVIEWED
as complying with the Florida
Building Code
Acceptance No 07-0524-05
Expiration Date 12/10/2011
By *Helmut A. Althoff*
Missile Duct Product Control
Division

PRODUCT REVIEWED
as complying with the Florida
Building Code
Acceptance No 06-0913-07
Expiration Date 12/10/2007
By *Helmut A. Althoff*
Missile Duct Product Control
Division




160 SW 12th AVENUE, #106
DEERFIELD BEACH, FL 33442
PH: (954) 354-0660 FAX: (954) 354-0443
WWW.ENGEXP.COM

FRANK L. BENNARDO, P.E.
FL #PE0046549

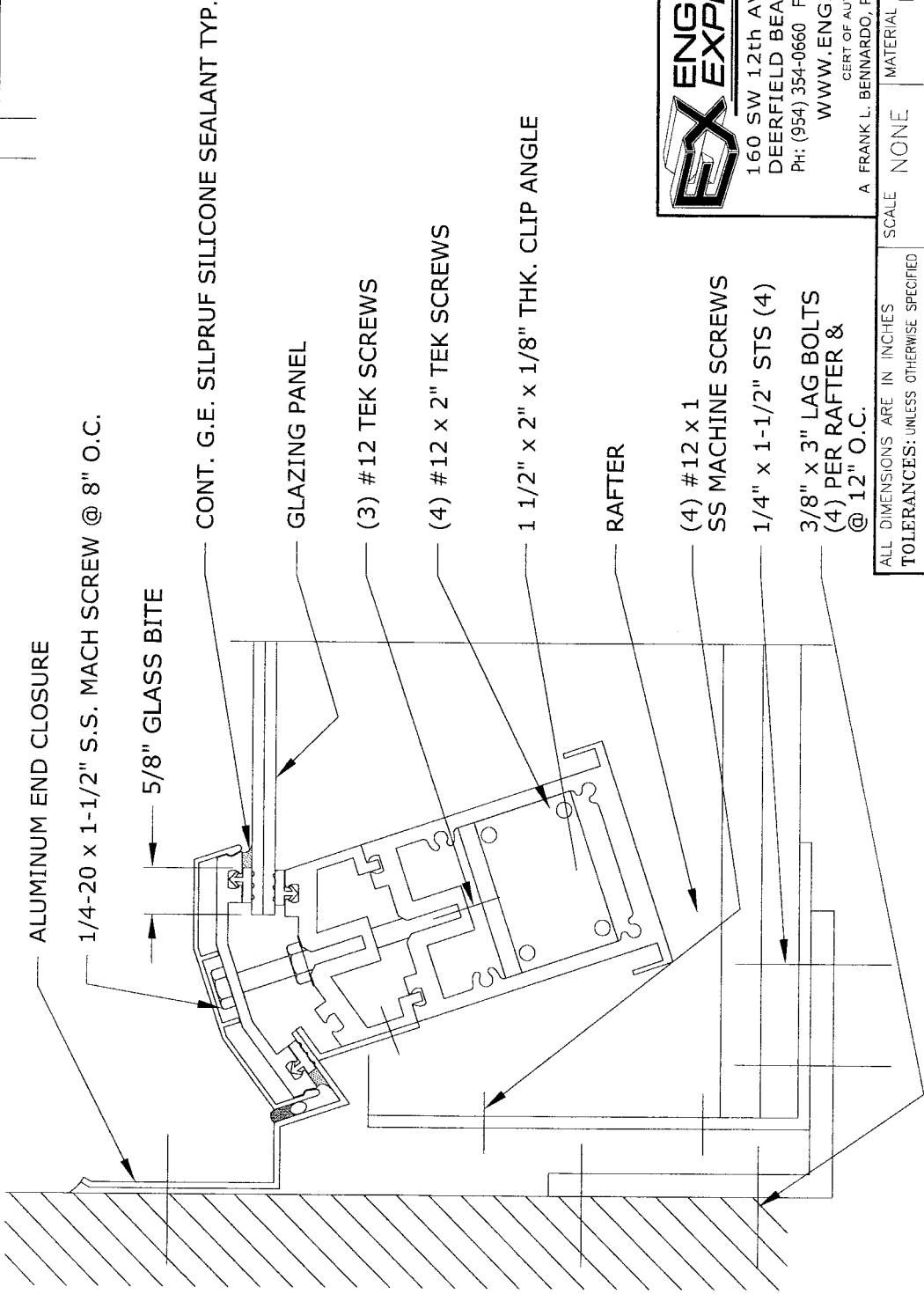
MAR 21 2007

VALID ONLY WITH RAISED
ENGINEER SEAL

| | | | | |
|--|-------|----------|----------|------|
| ALL DIMENSIONS ARE IN INCHES TOLERANCES: UNLESS OTHERWISE SPECIFIED | SCALE | NONE | MATERIAL | NONE |
| .X: ±.06 XX: ±.03 XXX: ±.010 ANGULAR: ±2° FRACTIONAL: ±1/16" | DATE: | 12-21-06 | | |
| DRAWN BY: R.P. | DATE: | | | |
| APPROVED BY: | | | | |
|  <p>Bristolite® Skylights 401 East Goetz Avenue, Santa Ana, CA 92707 714.540.8950 / FAX 714.545.2364</p> | | | | |
| NAME: Missile Impact Test | | | | |
| DWG NO. Submittal 12-20-2006 - 4 | | | | |
| REV A | | | | |
| NEXT ASSEMBLY | | | | |
| SHEET 4 OF 8 | | | | |

NOTES: UNLESS OTHERWISE SPECIFIED

| REVISIONS | | |
|-----------|-------------------------------|------------|
| REV. | DESCRIPTION | DATE |
| A | REVISION PER METRO-DADE NOTES | 12-20-2006 |
| | | R.P. |



PRODUCT RENEWED
 as complying with the Florida
 Building Code
 Acceptance No. 07-0524-05
 Expiration Date 12/10/2011
 By *He Long A. Hahn*
 Miami Dade Product Control
 Division

PRODUCT RENEWED
 as complying with the Florida
 Building Code
 Acceptance No. 06-0913-07
 Expiration Date 12/10/2007
 By *He Long A. Hahn*
 Miami Dade Product Control
 Division

EX ENGINEERING EXPRESS®

FRANK L. BENNARDO, P.E.
 FL #PE0046549

160 SW 12th AVENUE, # 106
 DEERFIELD BEACH, FL 33442
 Ph: (954) 354-0660 Fax: (954) 354-0443
 WWW.ENGENXP.COM

CERT OF AUTH #8885
 A FRANK L. BENNARDO, P.E., INC. INNOVATION
 ENGINEER SEAL

VALID ONLY WITH RAISED
 ENGINEER SEAL

MAR 21 2007

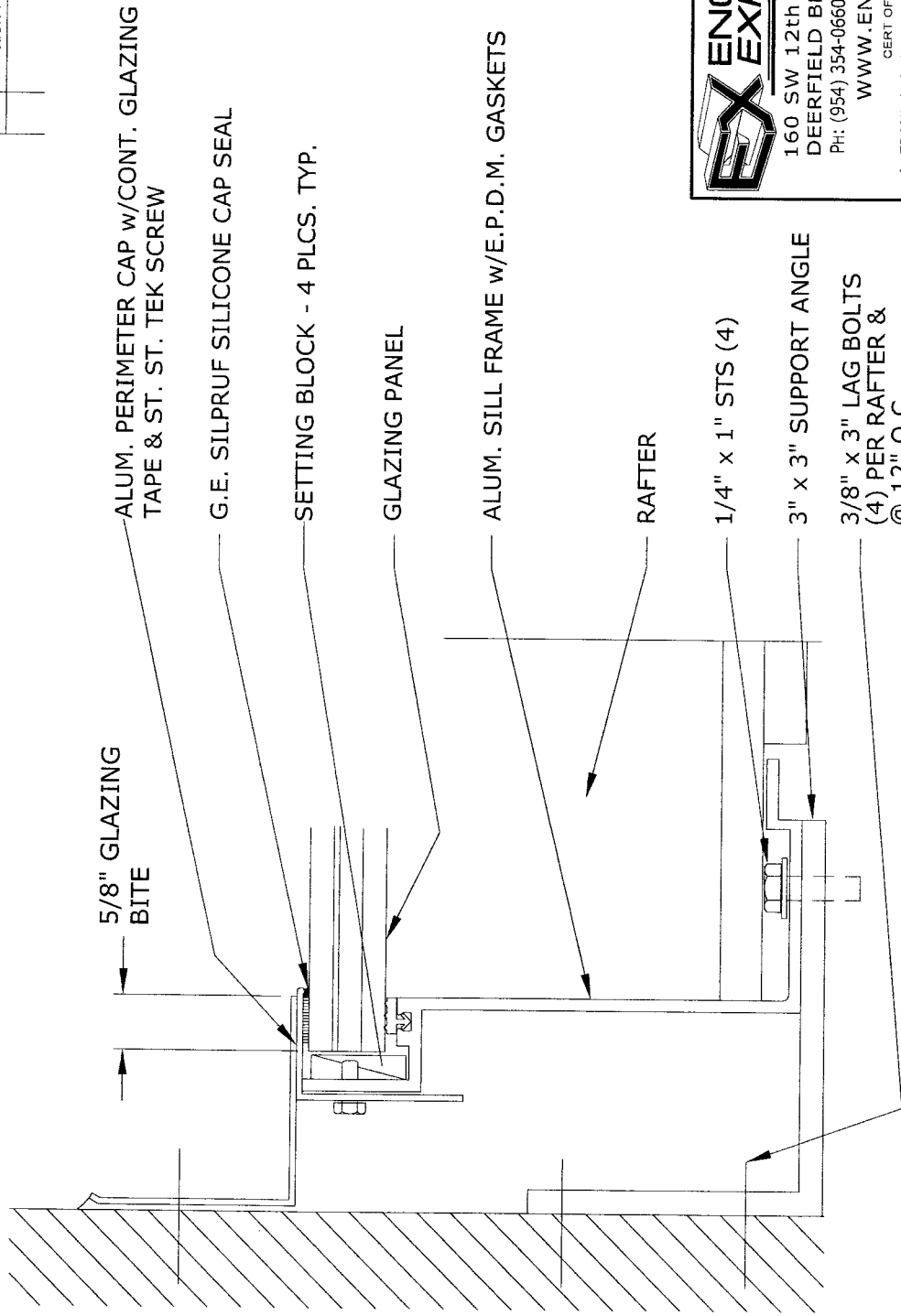
| | | | |
|---|------|----------|----------------------------|
| SCALE | NONE | MATERIAL | NONE |
| ALL DIMENSIONS ARE IN INCHES TOLERANCES: UNLESS OTHERWISE SPECIFIED .x: ±.06 .xx: ±.03 .xxx: ±.010 ANGULAR: ±2° FRACTIONAL: ±1/16" | | | |
| DRAWN BY: | R.P. | DATE: | 12-21-06 |
| APPROVED BY: | | DATE: | |
| NAME: Missile Impact Test DWG NO.: Submittal 12-20-2006 - 5 NEXT ASSEMBLY: REVISION A | | | |
| | | | REV A |
| | | | SHEET 5 OF 8 |

Bristolite® Skylights
 401 East Goetz Avenue, Santa Ana, CA 92707
 714.540.8950 / FAX 714.545.2364

DETAIL 4
HEAD DETAIL

NOTES: UNLESS OTHERWISE SPECIFIED

| REVISIONS | | DATE | BY |
|-----------|-------------------------------|------------|------|
| REV. | DESCRIPTION | | |
| A | REVISION PER METRO-DADE NOTES | 12-20-2006 | R.P. |



PRODUCT RENEWED
 as complying with the Florida
 Building Code
 Acceptance No. 07-0524-05
 Expiration Date 12/10/2011
 By Heather A. Hahn
 Miami Dept. Product Control
 Division

PRODUCT RENEWED
 as complying with the Florida
 Building Code
 Acceptance No. 06-0913-07
 Expiration Date 12/10/2007
 By Heather A. Hahn
 Miami Dept. Product Control
 Division

ENGINEERING EXPRESS
 160 SW 12th AVENUE, # 106
 DEERFIELD BEACH, FL 33442
 PH: (954) 354-0660 FAX: (954) 354-0443
 WWW.ENGEXP.COM
 CERT. OF AUTH. #8885
 A FRANK L. BENNARDO, P.E., INC. INNOVATION

FRANK L. BENNARDO, P.E.
 FL #PE0046549

MAR 21 2007
 VALID ONLY WITH RAISED
 ENGINEER SEAL

| | | | |
|--|------|--|------|
| SCALE | NONE | MATERIAL | NONE |
| ENGINEERING EXPRESS 160 SW 12th AVENUE, # 106 DEERFIELD BEACH, FL 33442 PH: (954) 354-0660 FAX: (954) 354-0443 WWW.ENGEXP.COM CERT. OF AUTH. #8885 A FRANK L. BENNARDO, P.E., INC. INNOVATION | | | |
| ENGINEERING EXPRESS 160 SW 12th AVENUE, # 106 DEERFIELD BEACH, FL 33442 PH: (954) 354-0660 FAX: (954) 354-0443 WWW.ENGEXP.COM CERT. OF AUTH. #8885 A FRANK L. BENNARDO, P.E., INC. INNOVATION | | | |
| ENGINEERING EXPRESS 160 SW 12th AVENUE, # 106 DEERFIELD BEACH, FL 33442 PH: (954) 354-0660 FAX: (954) 354-0443 WWW.ENGEXP.COM CERT. OF AUTH. #8885 A FRANK L. BENNARDO, P.E., INC. INNOVATION | | Bristolite Skylights 401 East Goetz Avenue, Santa Ana, CA 92707 714.540.8950 / FAX 714.545.2364 | |
| ALL DIMENSIONS ARE IN INCHES TOLERANCES: UNLESS OTHERWISE SPECIFIED .x: ±.06 .xx: ±.03 .xxx: ±.010 ANGULAR: ±2° FRACTIONAL: ±1/16" | | DRAWN BY: R.P. DATE: 12-21-06 APPROVED BY: DATE: | |
| NAME: Missile Impact Test | | | |
| DWG NO.: Submittal 12-20-2006 - 6 | | REV: A | |
| NEXT ASSEMBLY: 6 OF 8 | | | |

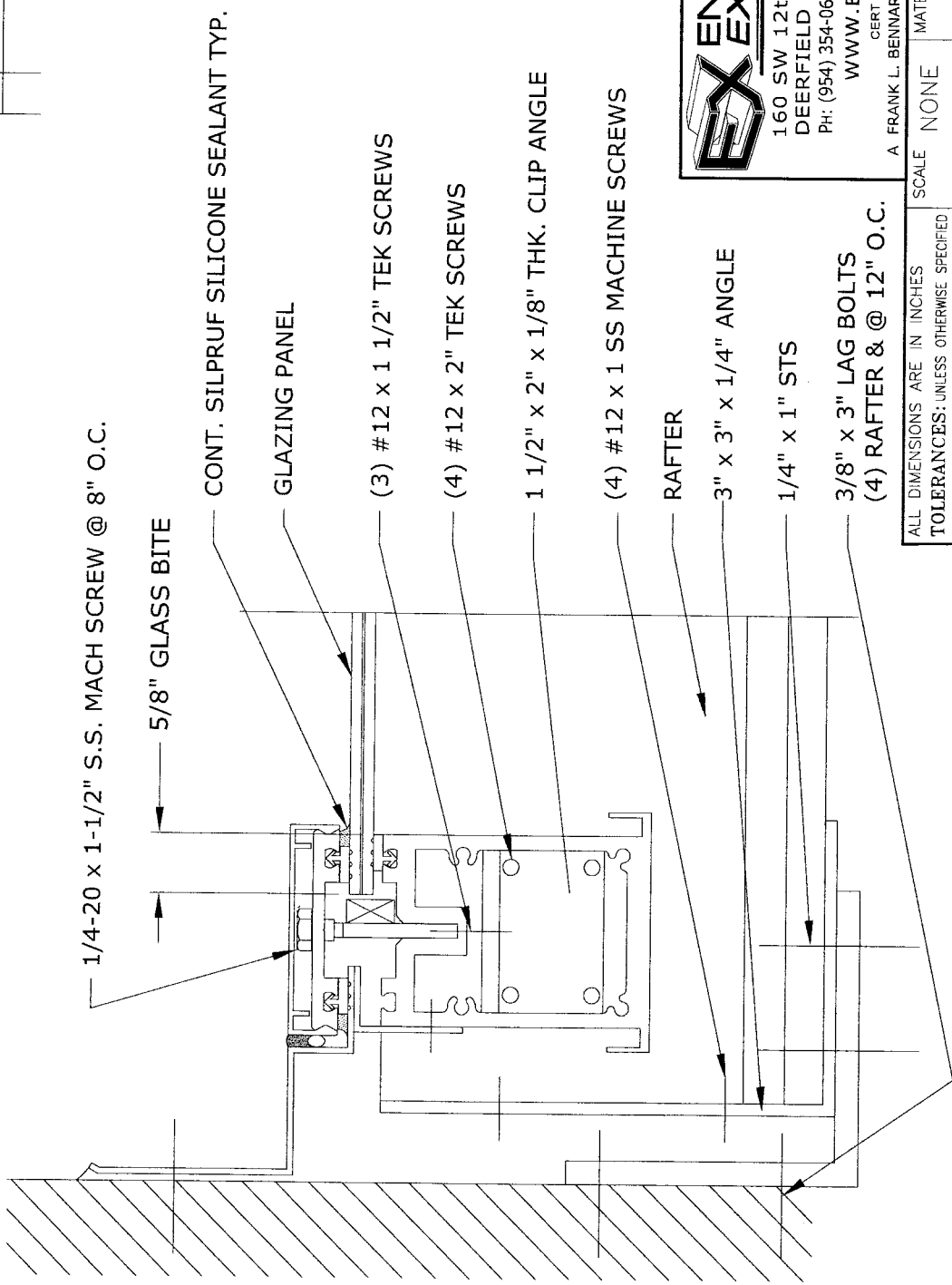
STRUCTURAL CURB BY OTHERS

DETAIL 5

SILL

NOTES: UNLESS OTHERWISE SPECIFIED

| REVISIONS | | DATE | BY |
|-----------|-------------------------------|------------|------|
| REV. | DESCRIPTION | | |
| A | REVISION PER METRO-DADE NOTES | 12-20-2006 | R.P. |



DETAIL 6
SILL TYPE DETAIL

PRODUCT RENEWED
as complying with the Florida
Building Code
Acceptance No. 07-0524-05
Expiration Date 12/10/2007
By *Helena A. Miller*
Miami Dade Product Control
Division

PRODUCT RENEWED
as complying with the Florida
Building Code
Acceptance No. 06-0913-07
Expiration Date 12/10/2007
By *Helena A. Miller*
Miami Dade Product Control
Division

ENGINEERING EXPRESS®
FRANK L. BENNARDO, P.E.
FL #PE0046549

160 SW 12th AVENUE, #106
DEERFIELD BEACH, FL 33442
PH: (954) 354-0660 FAX: (954) 354-0443
WWW.ENGEXP.COM

CERT. OF AUTH #9885
A FRANK L. BENNARDO, P.E., INC. INNOVATION
ENGINEER SEAL

MAR 21 2007

VALID ONLY WITH RAISED ENGINEER SEAL

| | |
|---|----------------|
| SCALE: NONE | MATERIAL: NONE |
| Bristolite® Skylights 401 East Goetz Avenue, Santa Ana, CA 92707 714.540.8950 / FAX 714.545.2364 | |
| NAME: Missile Impact Test | |
| DWG NO. Submittal 12-20-2006 - 7 | REV. A |
| NEXT ASSEMBLY | SHEET 7 of 8 |

ALL DIMENSIONS ARE IN INCHES
TOLERANCES: UNLESS OTHERWISE SPECIFIED
 .x: ±.06 .xx: ±.03
 .xxx: ±.010 ANGULAR: ±2°
 FRACTIONAL: ±1/16"
 DRAWN BY: R.P. DATE: 12-22-06
 APPROVED BY: DATE:

NOTES: UNLESS OTHERWISE SPECIFIED

| REVISIONS | | |
|-----------|-------------------------------|------------|
| REV. | DESCRIPTION | DATE |
| A | REVISION PER METRO-DADE NOTES | 12-20-2006 |
| | | R.P. |

REFERENCE NOTES:

1. MAXIMUM DESIGN PRESSURES ARE +51.38 PSF AND -68.5 PSF. POSITIVE AND NEGATIVE DESIGN PRESSURES CALCULATED FOR USE WITH THIS SYSTEM SHALL BE DETERMINED BY OTHERS ON A JOB-SPECIFIC BASIS IN ACCORDANCE WITH THE GOVERNING CODE.
2. ALL ALUMINUM TO BE 6063-T6 ALLOY.
3. MAXIMUM GLAZING PANEL SIZE IS 48" X 67 5/8".
4. GLAZING TO BE 3/8" GLASS-CLAD POLYCARBONATE BY GLOBE AMERADA GLASS CO. (MIAMI-DADE COUNTY PRODUCT CONTROL APPROVAL NUMBER 98-0513.03).
5. FASTENERS TO BE STAINLESS STEEL.
6. GASKETS TO BE ARROW-SHIM W/DART EPDM WITH DUROMETER RANGE OF 50 TO 60 SHORE "A" FROM TREMCO.
7. ALL SILICON TO BE G.E. SILLPRUF.
8. ALL JOINTS ON PRESSURE BAR AND SNAP COVER TO BE SILLICONED.
9. ALL SEPARATION MATERIAL IS REQUIRED WHEN ALUMINUM COMES IN CONTACT WITH STEEL, WOOD OR OTHER DISSIMILAR MATERIALS. THE SEPARATION MATERIAL SHALL BE PER SECTION 2003.8.4 OF THE FLORIDA BUILDING CODE 2004 EDITION.
10. GLAZING BLOCK TO BE NEOPRENE 1/2" X 1/4" WITH DUROMETER OF 90.
11. THIS APPROVAL IS LIMITED TO THE GLAZING PANEL AND IT'S MAXIMUM AREA, THE FULLY ASSEMBLED GLAZING DETAILS TO THE SUPPORTING RAFTERS AND PURLINS AND THE MAXIMUM QUALIFIED DESIGN PRESSURE SHOWN ON THIS DRAWING.
12. THE SYSTEM DETAILED HEREIN IS GENERIC AND DOES NOT PROVIDE INFORMATION FOR A SPECIFIC SITE. FOR SITE CONDITIONS DIFFERENT FROM THE CONDITIONS DETAILED HEREIN, A LICENSED ENGINEER OR REGISTERED ARCHITECT SHALL PREPARE SITE SPECIFIC DOCUMENTS FOR USE IN CONJUNCTION WITH THIS DOCUMENT.
13. THE STRUCTURAL ADEQUACY OF THE SUPPORTING STRUCTURAL MEMBERS (CURB, RAFTERS, PURLINS, AND ALL OTHER FRAMING MEMBERS) IS NOT PART OF THIS APPROVAL AND IT SHALL BE REVIEWED BY THE STRUCTURAL PLANS EXAMINER OF THE CORRESPONDING BUILDING DEPARTMENT ON A JOB SPECIFIC BASIS.

Metro-Dade County
Large Missile Impact Test
For
Bristolite Skylights
Structural Skylight System

ENGINEERING EXPRESS®
 160 SW 12th AVENUE, #106
 DEERFIELD BEACH, FL 33442
 PH: (954) 354-0660 FAX: (954) 354-0443
 WWW.ENGEXP.COM

CERT. OF AUTH #9885
 A FRANK L. BENNARDO, P.E., INC. INNOVATION
 VALID ONLY WITH RAISED ENGINEER SEAL


FRANK L. BENNARDO, P.E.
 FL #PE0046549

MAR 21 2007

PRODUCT RENEWED
 as complying with the Florida Building Code
 Acceptance No 06-0913.07
 Expiration Date 12/10/2007
 By *Heidi A. Allen*
 Miami Dade Product Control
 Division

ALL DIMENSIONS ARE IN INCHES
 TOLERANCES: UNLESS OTHERWISE SPECIFIED
 .X: ±.06 .XX: ±.03
 .XXX: ±.010 ANGULAR: ±2°
 FRACTIONAL: ±1/16"
 DRAWN BY: R.P. DATE: 12-22-06
 APPROVED BY: DATE:

PRODUCT RENEWED
 as complying with the Florida Building Code
 Acceptance No 07-0524.05
 Expiration Date 12/10/2011
 By *Heidi A. Allen*
 Miami Dade Product Control
 Division

| | | | |
|---|--------------------------|---------------------|--------------|
| SCALE | NONE | MATERIAL | NONE |
|  Bristolite® Skylights 401 East Goetz Avenue, Santa Ana, CA 92707 714.540.8950 / FAX 714.545.2364 | | | |
| NAME | | Missile Impact Test | |
| DWG NO. | Submittal 12-20-2006 - 8 | | REV A |
| NEXT ASSEMBLY | SHEET | | 8 OF 8 |

NOTES: UNLESS OTHERWISE SPECIFIED